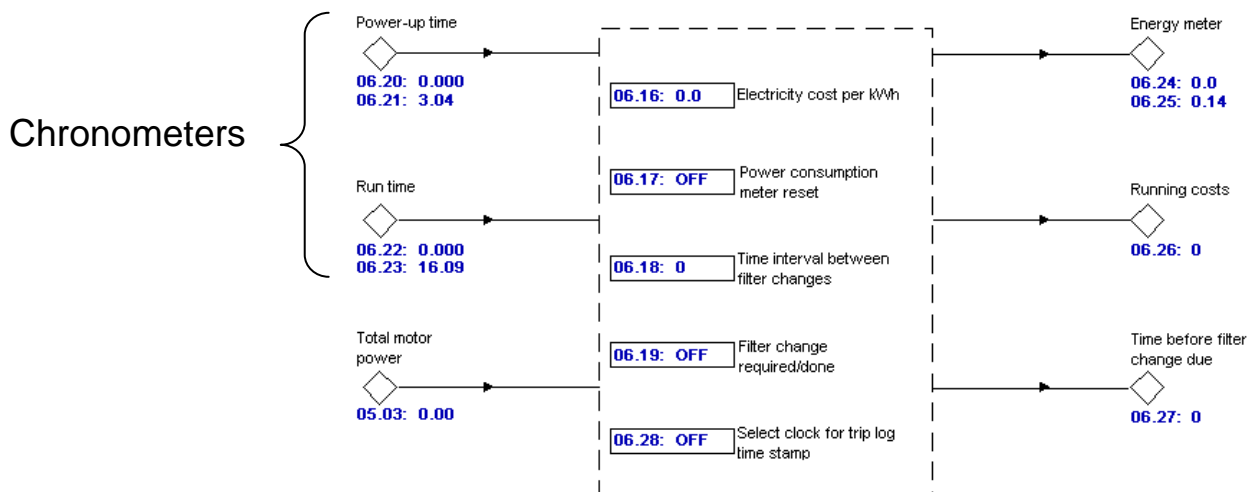


This Application Note is pertinent to the  
Unidrive SP, Commander GP20 and Affinity Families

## Enforcing an Outstanding Invoice

I've been asked on more than one occasion: **"Is there a way to make the drive not work after a period of time in order to force a customer to pay his bill ?"** It struck me as a rather strange request and we would prefer not getting into the middle of such affairs but yes there are a number of ways this could be accomplished. In order to gain some leverage over a customer who is enjoying the fruits of ones time and effort, but has been negligent in paying for your services, such a scheme is able to be implemented I suppose.

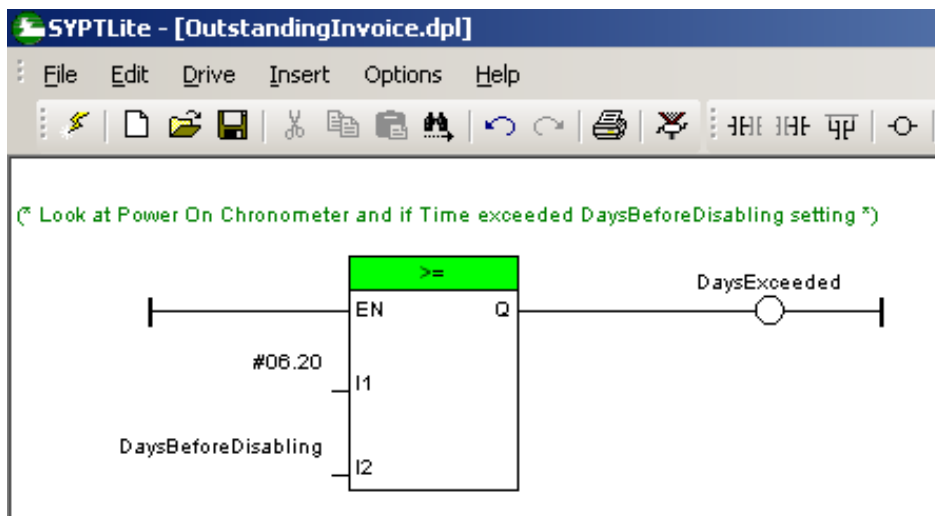
The Unidrive SP, Commander GP20 and Affinity families all contain Run Time Chronometers. There are timers that accumulate Total Run Time and Total Time that Power has been applied to the drive.



One might consider using parameter #6.20 for such a purpose. Parameter #6.20 is displayed as **y.ddd** where y is the # years and ddd is the number of days.

**06.20: Powered-up time: years.days**  
Units: yy.ddd  
Default: 0.000  
Range: 0.000 - 9.364

The Unidrive SP, Commander GP20 and Affinity families all have the ability to run a PLC program which is rather hidden from most customers. The following SyPT Lite program could be downloaded into the drive.

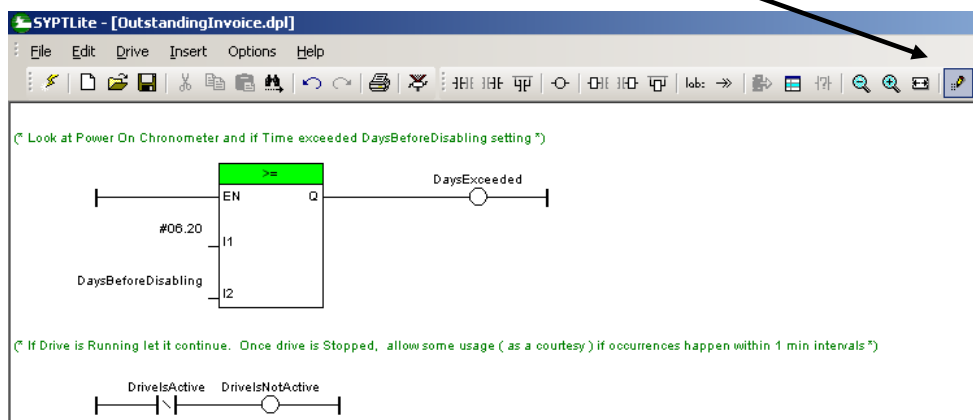


The following aliases were assigned to the appropriate internal drive registers:

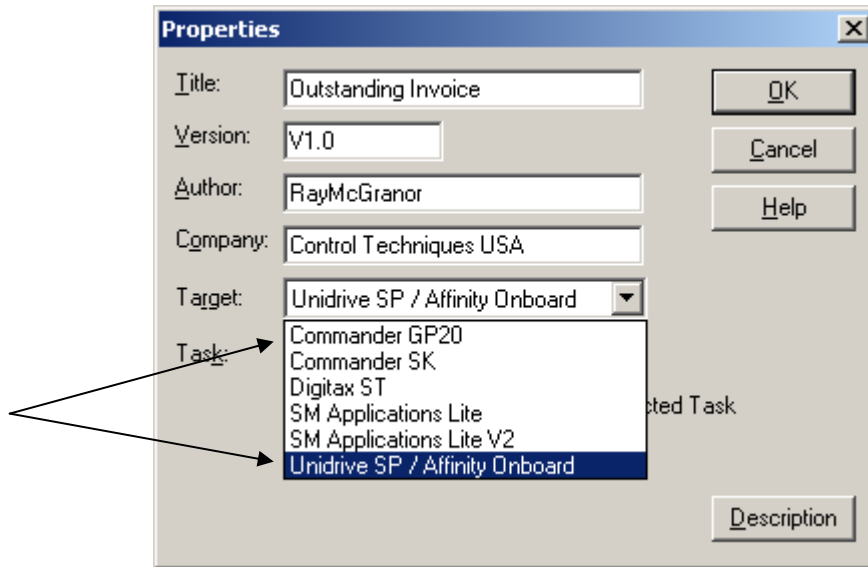
```
DaysExceeded #18.31
AllDone #18.33
DaysBeforeDisabling #18.11
DriveIsNotActive #18.34
AuxEnable #06.15
DriveIsActive #10.02
```

## Using this program

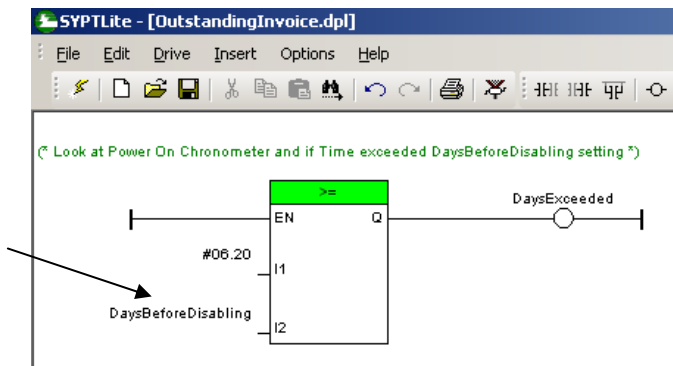
One would merely open this program using SyPT Lite and select the proper Drive Target type after clicking on the rightmost Toolbar icon.



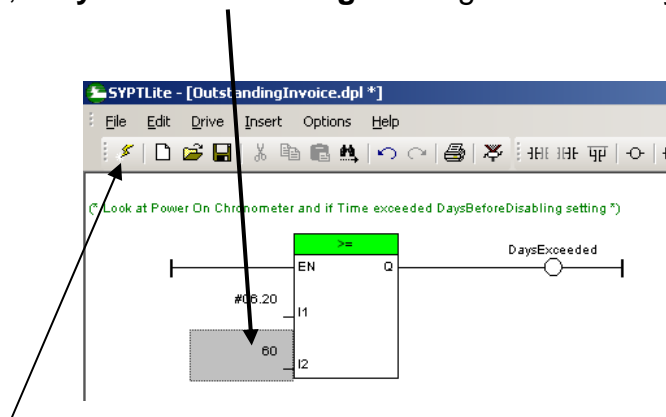
This would be: **Unidrive SP/Affinity On Board** or **Commander GP20**



Then double click on **DaysBeforeDisabling** and key in the number of desired days before disabling drive operation.

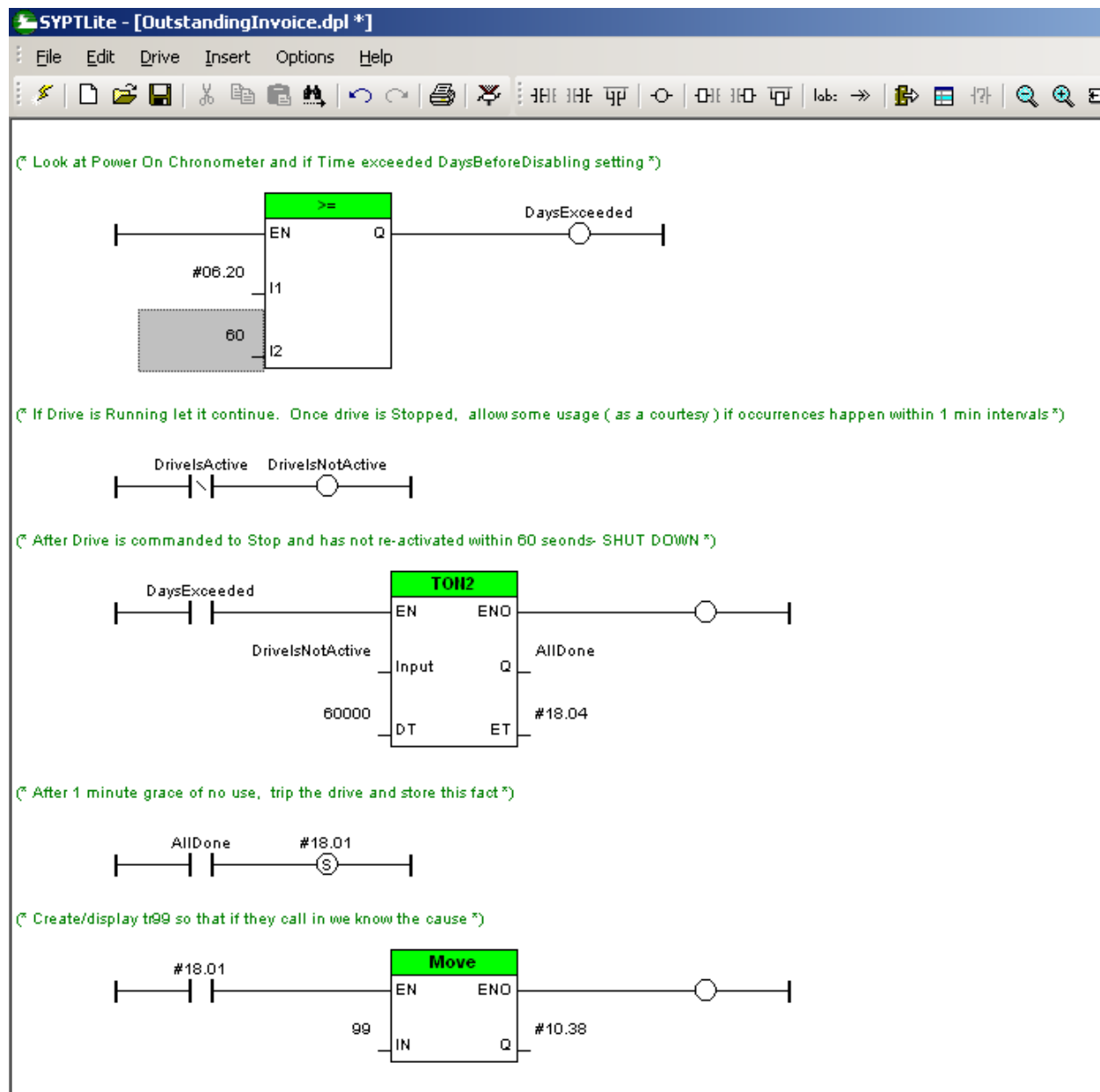


In this example, **DaysBeforeDisabling** is being set for 60 days.



Then you would merely click on the Lightning Bolt to compile and download into the drive.

## Complete Program



## Summary

If the drive was running a machine, and the # of days had expired, for courtesy reasons, the drive will remain in operation. This example will allow the drive to continue to operate after the expiration period until a Stop is commanded and the drive comes to rest. Then it will allow operation for 1 minute for some final movement if required by the process. However, if there is 1 min of inactivity the drive will become disabled and a **Err P t099** displayed as an indication of the cause. The drive will remain disabled until a re-activation procedure is performed.

## Re-Activation

In order to keep this method viable, you could contact Tech Support for the re-activation procedure. In order to keep this method viable, it may be necessary to have someone from your organization visit the site ( pick up your Outstanding Balance via Cashiers Check ) and perform the re-activation.

## Disclaimer:

This short program is an example of a method to disable the operation of the drive after a period of time. There may be application instances whereby disabling the drive could result in a hazard or safety concern. It is merely an example. Whomever elects to use or modify this example assumes responsibility for its action. Control Techniques and the author assumes no responsibility for its use or application.

To obtain a copy of this example program click here → [CTSL009.dpl](#)

Questions ?? Ask the Author:

**Author:** Ray McGranor  
(716)-774-0093  
(800)-367-8067

e-mail : <mailto:ray.mcgranor@emerson.com>



**SCIGATE**  
Your Automation Partner

**SCIGATE AUTOMATION (S) PTE LTD**  
No.1 Bukit Batok Street 22 #01-01 Singapore 659592  
Tel: (65) 6561 0488 Fax: (65) 6562 0588  
Email: [sales@scigate.com.sg](mailto:sales@scigate.com.sg) Web: [www.scigate.com.sg](http://www.scigate.com.sg)  
Business Hours: Monday - Friday 8.30am - 6.15pm